



Scotland's Wild Landscapes – New Ways Forward

Scotland's Wild Landscapes: Setting the Scene

Dr Steve Carver

Director

Wildland Research Institute (WRI)

University of Leeds



Wild Land... What is it exactly?

- Personal knowledge and experience
- Formal definitions
 - NPPG14 (1998)
 - SNH and NTS (2002)
 - JMT











Existing definitions

- *“Uninhabited and often relatively inaccessible countryside where the influence of human activity on the character and quality of the environment has been minimal.” (NPPG 14, 1998)*
- *“There are parts of Scotland where the wild character of the landscape, its related recreational value and potential for nature are such that these areas should be safeguarded against inappropriate development or land-use change.” (SNH, July 2002)*



National Trust for Scotland

- *“Wild land in Scotland is relatively remote and inaccessible, not noticeably affected by contemporary human activity, and offers high-quality opportunities to escape from the pressures of everyday living and find physical and spiritual refreshment... The primary purpose will be to identify, protect and enhance the ‘core wild land’ areas of Scotland.”* (NTS, January 2002)



Wild Land Criteria

- ***“Uninhabited land containing minimal evidence of human activity”*** (JMT, 2004)
- **Wild land is:**
 - largely unaffected by human intervention, remote or 'off the beaten track', rugged or physically challenging and naturally hazardous grand in scale
- **Wild land provides:**
 - a refuge for wildlife, a sense of peace, quiet and solitude, a sense of wonder, drama or awe, inspiration and satisfaction



The Importance of Wild Land

- 91% of Scottish residents think that it is important to have wild places (SNH, 2007)
 - Part of Scotland’s cultural heritage
 - Important for:
 - Wildlife and nature
 - Tourism and economy
 - Identity and culture
 - Environment and ecosystem services
 - Important for today and tomorrow

Is Scotland Unique?



South of the border?



Europe?



North America?



Further afield?





Wild Land Designation?

- Is there a need?
- Is wild land adequately protected already?
 - Existing designations (e.g. NSAs, National Parks)
 - Natura2000 network (SACs and SPAs)
- What about IUCN categories?
- What about marine areas?



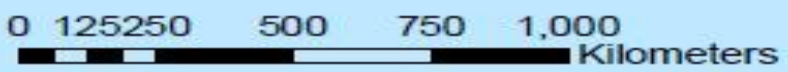
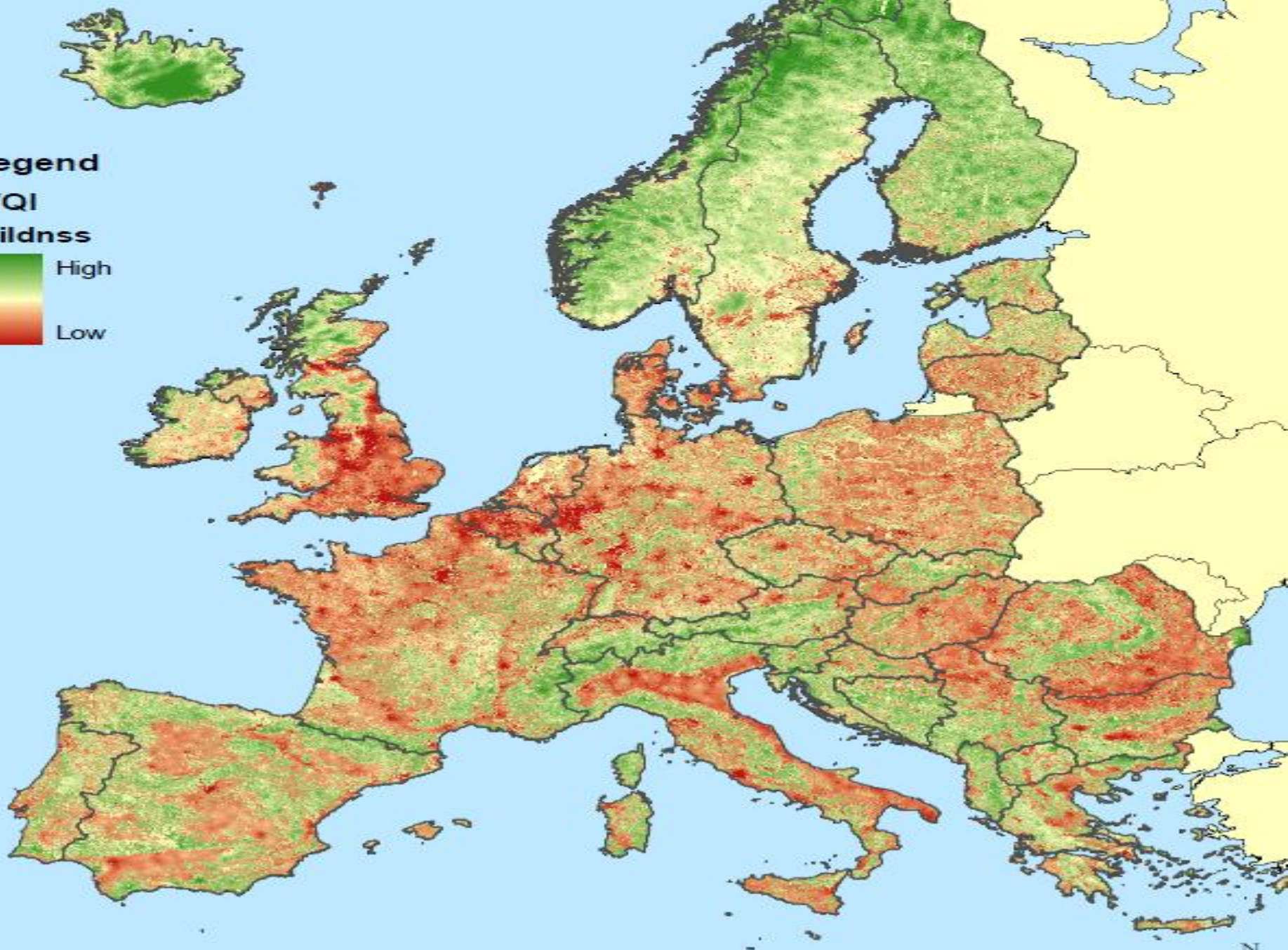
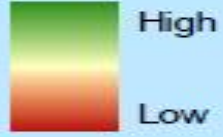
Where is it?

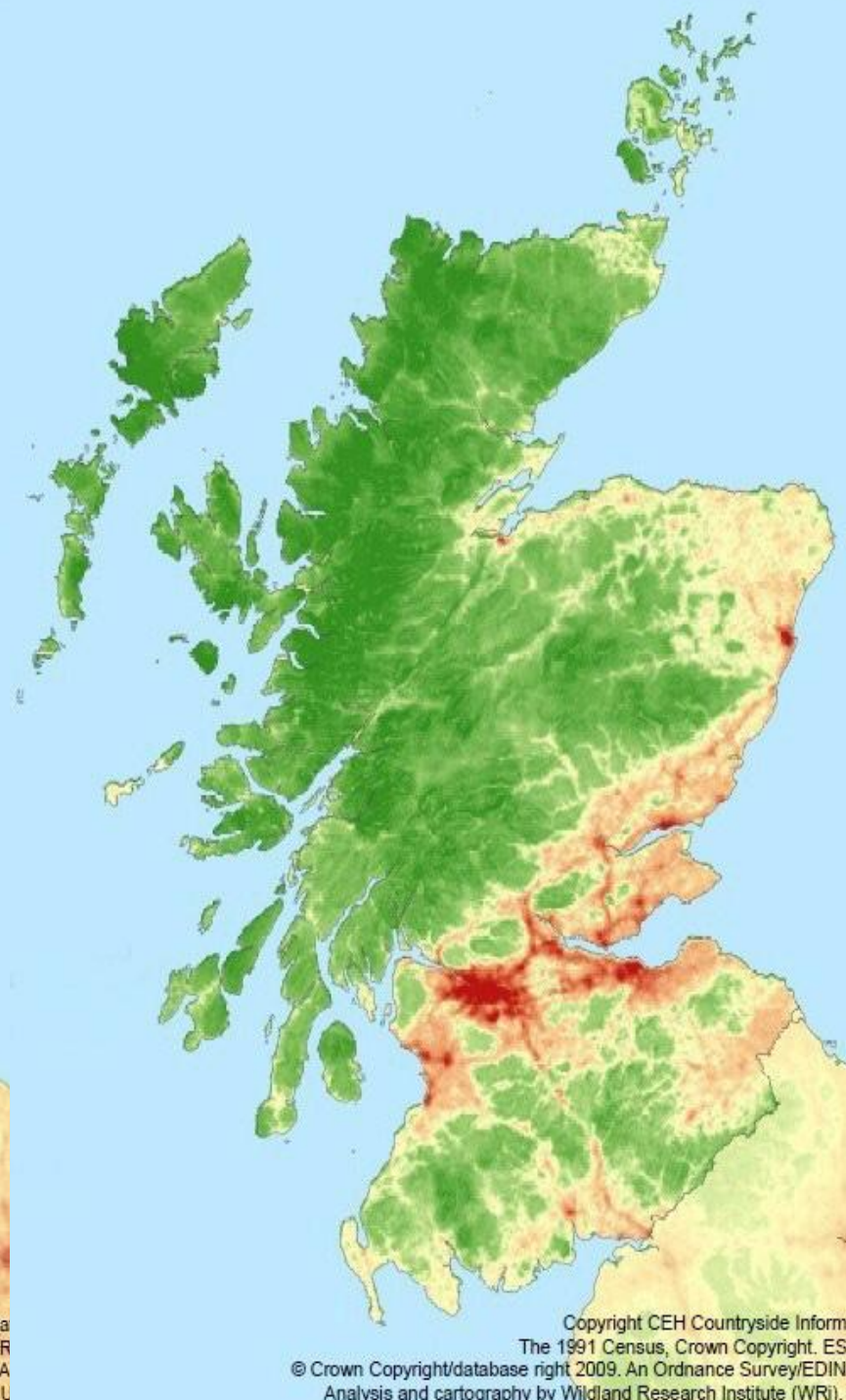
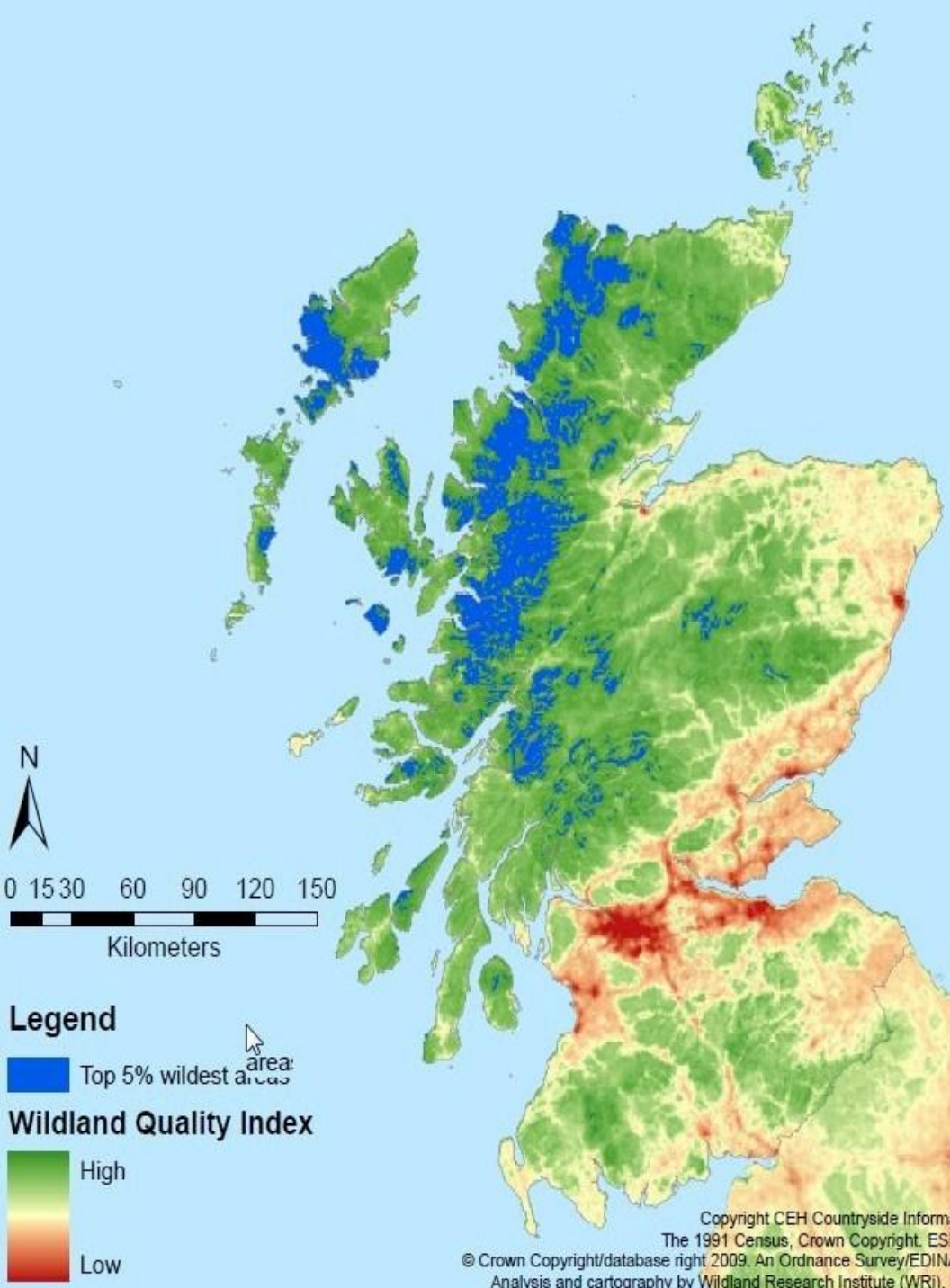
- Personal knowledge and experience
- Formal mapping
 - Based on definitions and criteria
 - Biophysical
 - Landscape/socio-cultural
 - Repeatable and defensible
 - Flexible and sensitive

Legend

WQI

Wildnss







Opportunities

- Follow on from Prague:
 - A review of status and conservation of wild land in Europe (Scottish Government)
 - Developing and implementing wild land policy
 - Habitat restoration (re-wilding) and species reintroductions
 - Education and generating wider support
 - Responding to threats

Be inspired. Think big. Be ambitious.



A large, flat, grey rock with several white scratches and the word "Questions?" written on it in bold black text. The rock is surrounded by dry, yellowish-brown grass and some green grass. The word "Questions?" is centered on the rock's surface.

Questions?