

The Wildland Research Institute



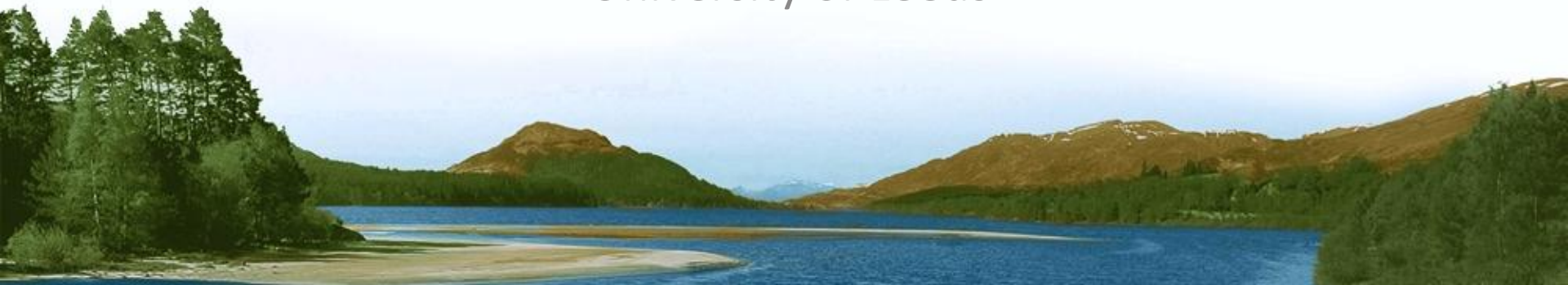
WRI

# The wilderness research agenda in Europe

Steve Carver

Wildland Research Institute

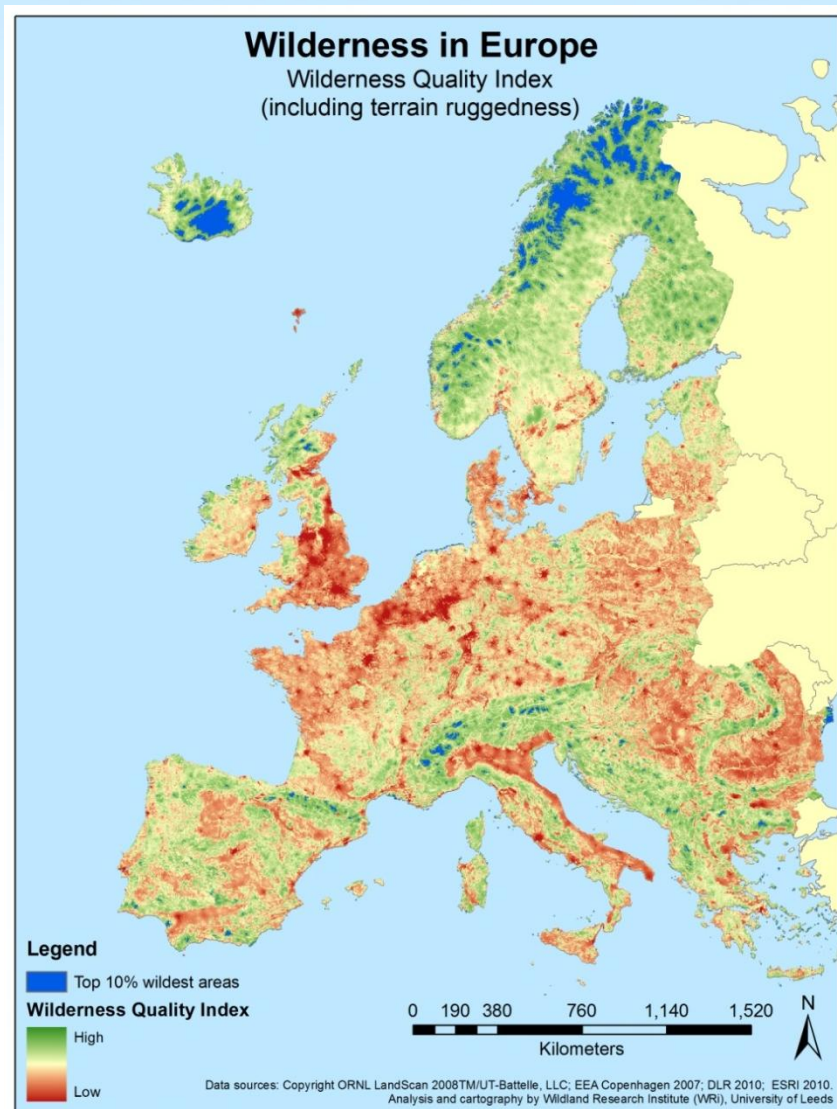
University of Leeds





# Outline

- Definition and mapping
- Benefits
  - Environmental
  - Biodiversity
  - Social
  - economic
- Innovative funding
- Management guidance

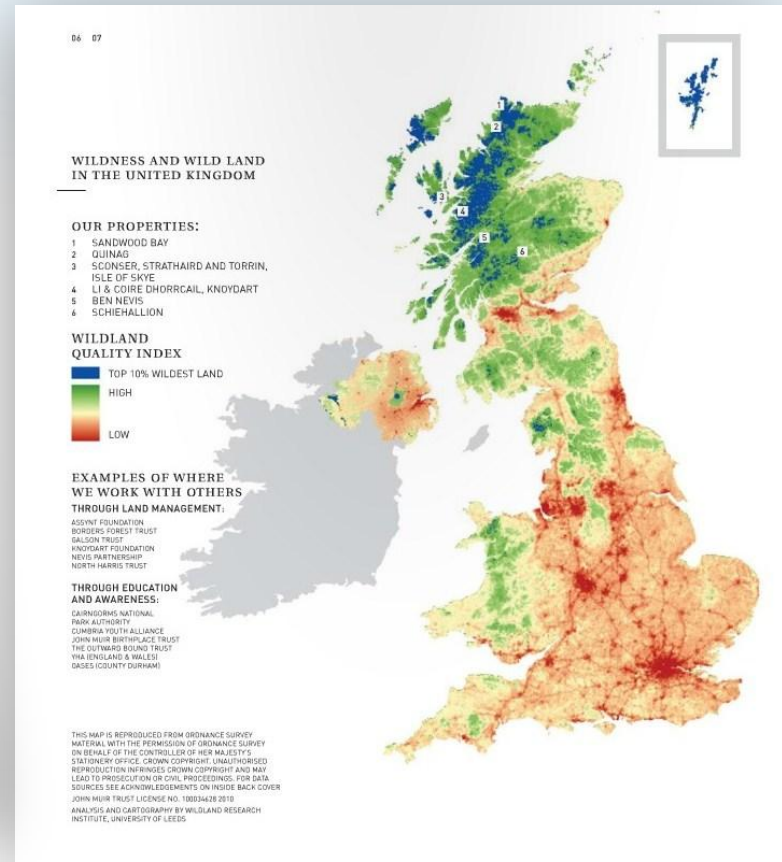


## Definitions

- What is it and where is it?
- Flexible definitions:
  - scalable and sensitive
  - robust and repeatable
- New wilderness maps
  - Regional
  - Nation mapping  
“champions”
- Wilderness register

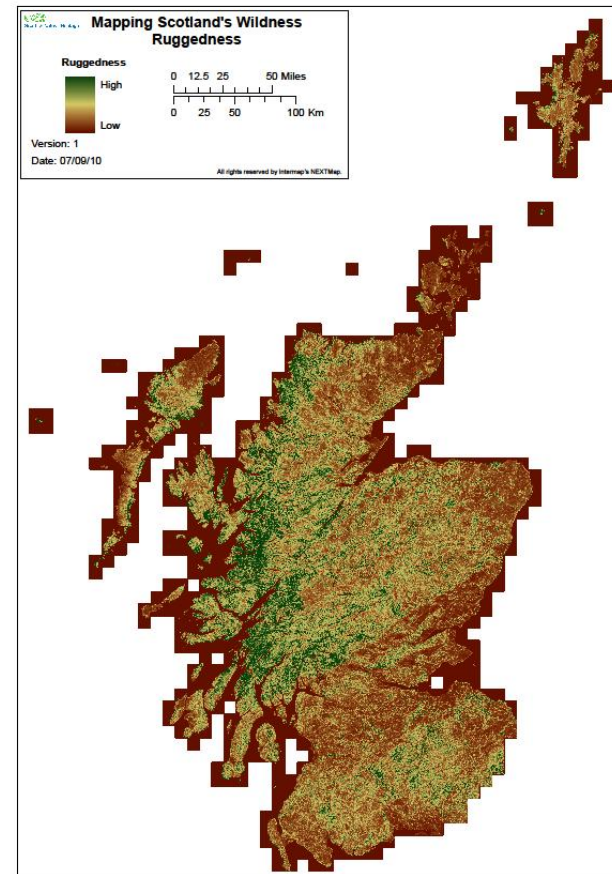
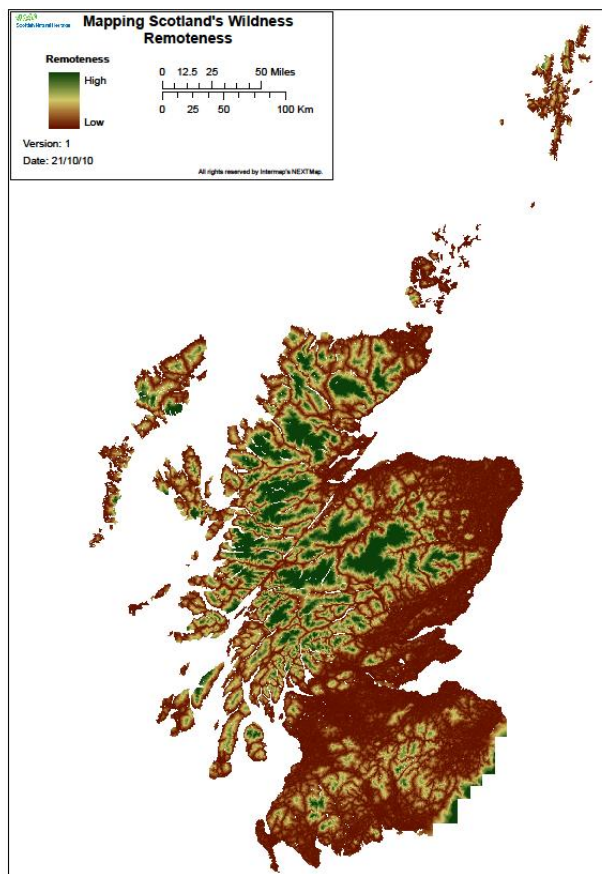
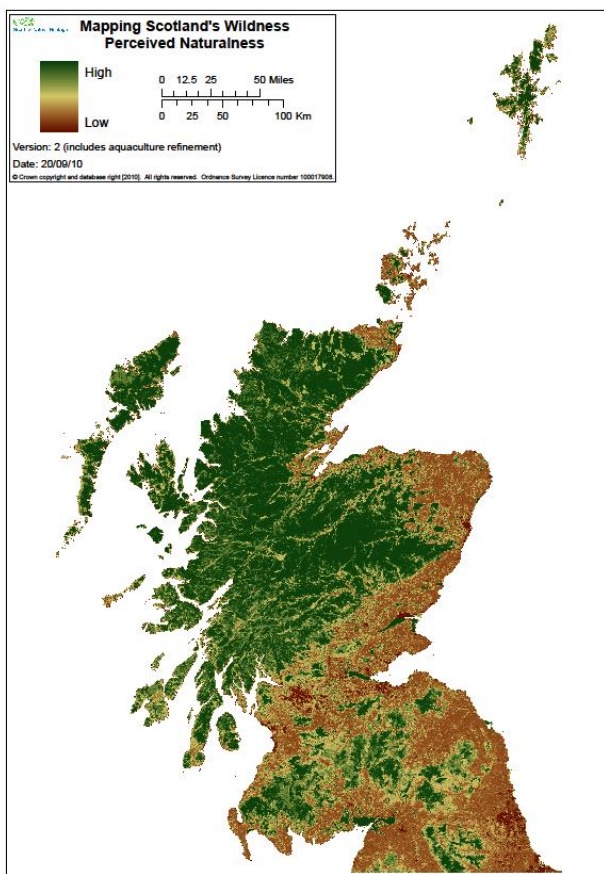


## National mapping





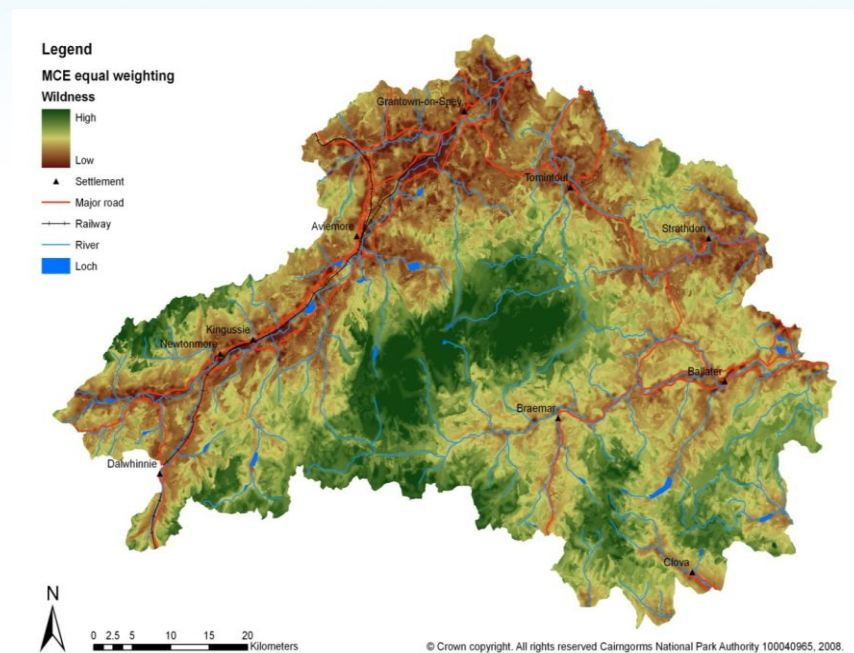
# Scotland: national mapping





## Local studies

- Cairngorms NP
  - Wildness mapping
  - Zone development
- Loch Lomond and the Trossachs NP
  - Wildness mapping



# Biodiversity

- Collate existing knowledge
- Requirements: size, shape and connectivity
  - How effective is the cores/corridors/stepping stones model?
  - What are the minimum size/linkage configurations?
- Defining the link with wilderness quality
  - Spatial and temporal relationships?
  - Effect of rewilding, restoration and non-intervention?



# Environmental benefits

- Ecosystem services:
  - Water quality/supply, flood mitigation, carbon storage/sequestration, nutrient cycling, pollution sinks, etc.
  - Total benefit of wilderness compared to modified ecosystems?
  - Requires quantification and valuation



# Social benefits

- Special qualities of wild areas for social programmes, youth at risk, health & wellbeing
  - Requires better scientific underpinning
  - Bio-psychometric testing and emotional geographies
- Need to reconnect urban populations to wild spaces
  - Access to peri-urban wild spaces
  - Education at all levels
  - Realisation of benefits



# Economic benefits

- Robust cost:benefit valuation of ecosystem services attributable to wilderness
  - Move to spend:return models?
  - Benefit of wilderness relative to alternatives?
  - Maximise benefit to local populations
- True value relative to costs foregone/money saved
  - Mechanisms for compensating local dis-benefits?



# Innovative funding mechanisms

- Land/wildlife/biodiversity banking
- CAP capitalisation (net present value to fund land purchase/restoration?)
- Carbon markets
- Niche market eco-tourism
- Consumer payments for ecosystem services



# Management guidance

- Non-intervention vs hands-on management
  - Collate examples of best practice
  - Generate guidelines
- Address difficulties of management under “favourable condition” status of Natura 2000
  - Identify wilderness/rewilding as special case to allow non-intervention and natural processes





## The Million Project

- Can the register help identify which 1 million ha?
- Can 1 million ha increase resilience to climate change?
- Can we connect 1 million people to 1 million ha?
- Can the 1 million help save 1 billion € / year?
- Is there economic capacity to generate 1 million € /year?



Dr Steve Carver, Director, Wildland Research Institute  
Email: [s.j.carver@leeds.ac.uk](mailto:s.j.carver@leeds.ac.uk), URL: <http://www.wildlandresearch.org>